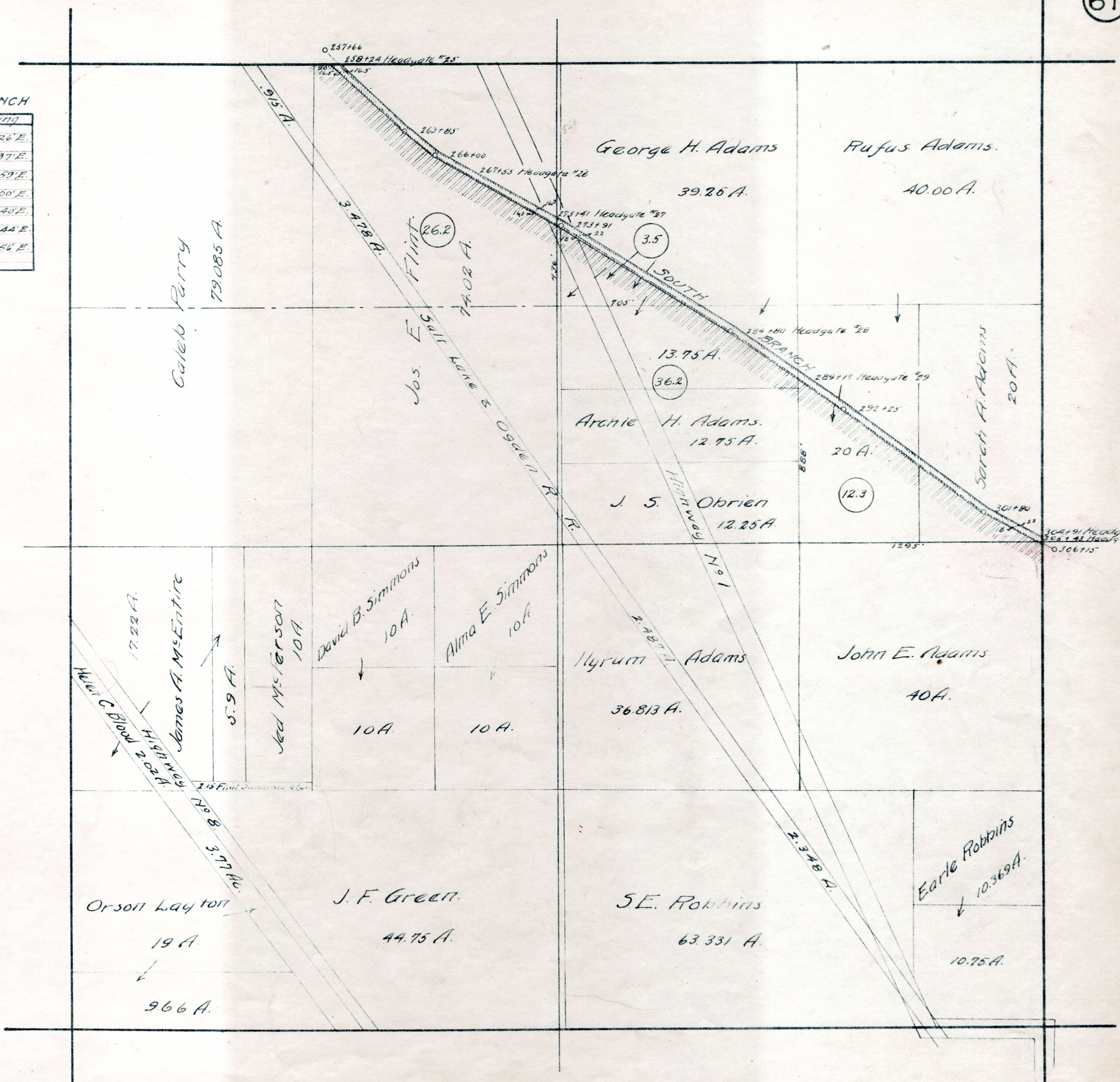


SOUTH BRANCH

Station	Bearing
257+66	S 44° 26' E.
263+85	S 51° 37' E.
266+00	S 60° 59' E.
273+91	S 58° 00' E.
284+80	S 54° 40' E.
292+25	S 53° 44' E.
301+80	S 61° 56' E.
306+15	



SECTION 7-T.4N.R.1W.S.L.M.